




REDEFINING  
PERFECTION

 **MERCURY**  
*Propellers*

# PERFECTION STARTS W



Through unmatched engineering, design, and innovation, molten metal is transformed into the highest-quality, best-performing, and best-selling marine propellers in the world.



ITH OUR PEOPLE



*E. Carl Kiekhaefer*

## THE STANDARD

Mercury Propellers founder E. Carl Kiekhaefer sold his first engine in 1939, determined to raise engine standards throughout the marine world. Today, when you experience the power of an engine driven by a Mercury Propeller, it's easy to see why Mercury Propellers remains focused on Carl Kiekhaefer's goals. With more than 70 years of dedication, passion and innovative engineering in the advancement of marine propulsion, Mercury Propellers is committed to improving boating through production of the most reliable, highest-quality and best-performing propellers on the market today. No matter what brand of outboard or sterndrive you have, Mercury has a propeller that will improve your boating experience.

Since day one, each and every Mercury Propeller has surpassed both industry standards and consumer expectations in terms of performance, durability and innovation. That is a tradition that continues today. When you buy a Mercury Propeller, you are purchasing the state of the art in propeller technology – both in terms of the propeller and the hub system. The following pages are filled with facts that demonstrate how no other propeller manufacturer comes close to Mercury. Let us show you how these facts set us apart:

4-5

## PERFORMANCE



6-7

## DURABILITY



8-9

## MATERIALS



10-13

## INNOVATION



# PERFORMANCE

ACTION  
EFFECTIVENESS  
FUNCTIONING  
FORCE  
OPERATION  
POWER  
PURSUIT  
SUCCESS  
VITALITY  
WORKING





## ACCELERATION TOP SPEED

#@% \$#/x!

**Fury 24p** 4.5 SEC 71 MPH

**Turbo** 4.5 SEC 67 MPH

BLAH

**Solas** 4.9 SEC 65 MPH

BLAH

**MI Wheel** 6.1 SEC 69 MPH

BLAH

**Powertech** 5.8 SEC 69 MPH

BLAH

**Yamaha** 5.3 SEC 68 MPH

BLAH

**Raker** 5.3 SEC 69 MPH

BLAH

All runs measured using a Triton TR-21X with 225 OptiMax ProXS under same conditions. Acceleration time is from 0-20 MPH.

## CONSTANTLY PERFECTING PERFORMANCE

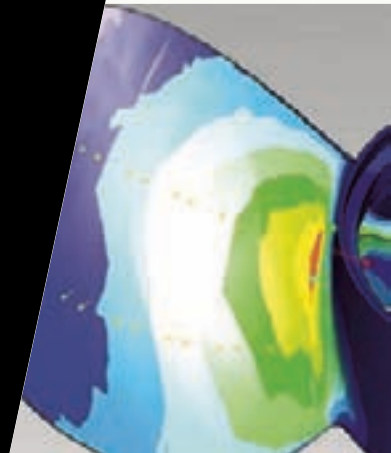
From the eye-watering top speed of the Fury Bass Propeller to the unmatched pulling power of the High Five tow-sports prop, Mercury is determined to meet the performance demands of all boaters. No other company matches the performance of our product or the depth and breadth of our product offering.

Mercury Propellers has a team of engineers with 160 years of combined propeller design experience. That experience has resulted in 3-D computer design software that optimizes every aspect of the propeller's design (blade shape, camber shape, pitch distribution, diameter, etc.). This experience sets us apart, allowing us to design propellers – like the Fury – that are years ahead of our competition.



# DURABILITY

BACKBONE  
CONSTANCY  
ENDURANCE  
GRIT  
HARD AS NAILS  
LASTINGNESS  
PERMANENCE  
PERSISTENCE  
STAMINA  
STAYING POWER





## NOBODY IS TOUGHER ON OUR PROPELLERS

From salt spray chambers, to mechanical torture tests, to round-the-clock endurance testing at Mercury's saltwater and freshwater testing facilities, we run each propeller design to the limit – and then some.

It's no wonder that our props are the approved choice of both the US Coast Guard and the Department of Homeland Security. If these heroes count on Mercury Propellers to get home safely – you can too.

Durability does not come from testing alone – it is designed into every prop from the start. Our team leverages computerized models to ensure strength is engineered into every prop and hub kit we make.



# MATERIALS

ADDITIVES  
BODY  
COMPONENTS  
CONSTITUENT  
ELEMENTS  
ESSENTIALS  
FACTORS  
INGREDIENTS  
INHERENT  
SUBSTANCE



NO ONE GETS MORE  
OUT OF METAL



Mercury's X7 stainless steel is legendary – shattering all the rules of propeller design.

- 30% stronger than conventional stainless steel.
- Four times more durable than conventional stainless steel.
- Allows prop designs that are impossible with conventional steel – like the class-leading Fury and Enertia.



Mercury's Aluminum props are constructed of Mercalloy – Mercury's own brand of aluminum alloy. Mercalloy is so unique – it's patented.

Mercalloy makes high-strength castings – castings that are so strong, they allow Mercury to design props with thinner blades. Thinner blades equal less drag and better performance on the water.

# INNOVATION

ADVANCE  
DEVELOPMENT  
FOREFRONT  
INVENTION  
LEADING EDGE  
MODIFICATION  
PIONEER  
REFINEMENT  
SPEARHEAD  
VANGUARD

## LEADERS ARE FOLLOWED

Mercury is the undisputed leader in outboard and sterndrive innovation. With the competition content to follow our lead, Mercury Propellers continues to innovate with the industry's most cutting-edge propeller designs, new patented propeller technologies and advanced hub systems.



### FLO-TORQ REFLEX

- The Flo-Torq Reflex is the latest addition to the Flo-Torq family of hub systems and is designed for 40-60 HP standard gearcase outboards.
- The Reflex is the first propeller hub system to provide the shock absorption of a rubber hub coupled with the superior strength of a two-part composite hub system.
- The Reflex's innovative design relies on the flexible Reflex fingers – constructed of Noryl GTX. The fingers are designed to flex up to 8 degrees, quieting rattle and vibration. The second part of the Reflex is made of Delrin – known for its resistance to fuel and oil.
- Together, the two parts produce a system as quiet as a rubber hub, but 75% stronger, providing longer service life.



### FLO-TORQ HUB SYSTEM

- The world's first modular hub system for outboards and sterndrives. Invented by Mercury – imitated by the competition.
- Provides the ultimate in drive protection – the Delrin sleeve sacrifices itself to protect key drive components in the event of contact with an underwater obstruction, while still giving you the ability to idle home safely.



### PVS PLUGS

PVS (Performance Vent System) is an exclusive Mercury innovation that allows you to custom-tune the venting of your propeller – this gives you the power to customize the performance of your propeller to match your engine. Just by varying the size of the exhaust hole, you can improve your performance. This is a system you can only get with select Mercury propellers.



# MERCURY **SPITFIRE**

INNOVATION

## **INTRODUCING MERCURY'S NEWEST ALUMINUM PROPELLER**

The Spitfire provides the ultimate performance available in an aluminum propeller. Spitfire is up to 25% faster from 0-20 mph with no penalty in top speed, while providing tenacious holding that will keep you on plane even during tight turns.

## **ACCELERATE AWAY FROM THE COMPETITION**

The 4-blade design allows Mercury engineers to pack more blade area within a smaller diameter. Keeping diameter low allows the prop to spin up quickly for unbelievable holeshot.

Mercury borrowed the Spitfire's low-diameter, high-blade area design from Mercury's Enertia and Fury stainless steel propellers. This design formula provides unheard-of acceleration while still maintaining the top end speed that made the Black Max the world's #1 aluminum propeller.

## **HOLD ON!**

The Spitfire's designed from the ground up to be the best-handling aluminum propeller Mercury has ever produced. The Spitfire features an extra cup design coupled with a straight trailing edge (similar to Mercury Racing's Cleaver) for ultimate holding even in the tightest maneuvers.





ACCELERATION 0 - 20 mph

MERCURY  
**SPITFIRE**

10.3 sec

**25%  
FASTER**

MERCURY  
**BLACKMAX**

13.5 sec

5 6 7 8 9 10 11 12 13

TOP SPEED

MERCURY  
**SPITFIRE**

30.2 mph

MERCURY  
**BLACKMAX**

30.6 mph

0 5 10 15 20 25 30

ALPHA 4  
BLACK MAX  
BRAVO I  
BRAVO TWO  
BRAVO THREE  
ENERTIA  
FURY  
HIGH FIVE  
LASER II  
MAXIMUS  
MIRAGE PLUS  
REVOLUTION 4  
SPITFIRE  
TEMPEST PLUS  
TROPHY PLUS  
TROPHY SPORT  
VENGEANCE  
VENSURA

# MERCURY PROPELLERS

16-17

ALUMINUM



18-21

SPORT



22-25

ELITE



26-27

COMP



# ALUMINUM

## SERIES

No other propellers on the market today provide as much performance, durability and value.



**NEW!**



### BLACK MAX

It's not just an average aluminum propeller – there is a reason the Black Max is the world's best-selling propeller! It's designed to be the perfect complement to a Mercury outboard or MerCruiser stern drive – that's the reason Black Max propellers are installed as original equipment by more boat builders than any other propeller in the world.

- Available in 6- to 23-pitch
- Right-hand rotation
- Fits all Mercury outboards (2.5 hp and above), Alpha and Bravo One stern drives
- Recommended for engines with less than 250 horsepower and a top speed of less than 50 MPH

### ALPHA 4

The Alpha 4 aluminum propeller provides four-blade performance and acceleration at an affordable price. The Alpha 4 is an outstanding propeller for stern drive-powered runabouts, as well as cruisers. With an Alpha 4, your boat will get on plane quicker and stay on plane at lower speeds than with a comparable three-blade propeller. The Alpha 4 is also an excellent water sports prop.

- Available in 16-, 18- and 20-pitch
- Right-hand and left-hand rotation
- Fits outboards (135hp and above), Alpha and Bravo One stern drives
- Recommended for inline 4, V6- and V8-powered stern drives.

### SPITFIRE

The Spitfire is Mercury's most advanced aluminum propeller. Four aggressive blades with high rake angles and extra cup provide tenacious holding in turns and 25% faster acceleration with no penalty in top speed. Once again Mercury has re-written the rules of propeller design and engineering.

- Available in 9.5- to 19-pitch
- Designed specifically for boats using mid-range 25 - 125 hp outboards – including aluminum fishing and pontoon boats.
- Three propeller models are designed for the demands of pontoon boats, featuring extra holding and life to wake up the performance of your pontoon.



# SPORT

## SERIES

Mercury's best value propellers for boaters ready to step up to the durability and performance of stainless steel.



### LASER II

The one that started it all. The large-tube Laser II (135 horsepower and up models) is ideal for smaller 15- to 18-foot bass boats with 135 - 200hp engines. The small-tube Laser II is the perfect complement for 75 - 125hp bass boats and aluminum deep-V fishing boats where speed is a priority.

- Available in 19- to 26-pitch
- Right-hand rotation (select left-hand rotation propellers also available)
- Fits outboards 75hp and up, and Alpha and Bravo One stern drives
- Recommended for outboard-powered bass boats with less than 200 horsepower and 75 - 115hp aluminum deep-V boats



### VENGEANCE

The Vengeance is Mercury's general-purpose line of stainless steel propellers – providing Mercury quality and amazing durability at a price that represents real value for the dollar. The Vengeance provides increased top speed, acceleration, and durability versus a comparable aluminum prop.

- Available in 9- to 23-pitch
- Right-hand rotation (select left-hand rotation propellers also available)
- Fits all Mercury outboards and Alpha and Bravo One stern drives



### VENSTURA

The VenSura is a tough, durable saltwater propeller for single or twin outboard applications, 135hp and above. The VenSura's four-blade design delivers better acceleration and holding than a three-blade propeller. The VenSura's geometry provides strong bow lift – even in rough seas.

- Available in 17- to 23-pitch
- Right-hand and left-hand rotation



# ELITE

## SERIES

Mercury's most trusted and best-selling propeller designs.



### TEMPEST PLUS

Designed for bass and tournament multispecies/walleye boats 19 feet and longer, with 135hp and larger engines, the Tempest Plus is designed to make big boats go fast. Its high rake and bigger cup allow for outstanding lift and handling.

- Available in 17- to 29-pitch
- Right-hand rotation (select left-hand rotation propellers also available)
- Fits outboards (135hp and above); Alpha and Bravo One stern drives
- Recommended for outboard applications 135hp and above



### TROPHY PLUS

The Trophy Plus has a four-blade steel design that provides incredible bow lift for bass and flats boats that run at high drive heights. Its four-blade design provides quick holeshoot, stable handling at high speeds, and holds better than a three-blade propeller in tight turns – inspiring confidence on the water when the speeds get high.

- Available in 17- to 29-pitch
- Right-hand rotation
- 17- to 19-pitch recommended for 75-115hp outboards on multi-species, bass or flats boats
- 21- to 29-pitch recommended for 135 and higher horsepower outboard-powered bass boats



### TROPHY SPORT

The Trophy Sport is the ideal propeller for bay and flats boats using 40 - 60hp outboards. Its four-blade design provides quick holeshoot, stable secure handling, and holds better than a three-blade propeller in tight turns – inspiring confidence on the water.

- Available in 12 to 15-pitch
- Right-hand rotation
- Fits 40 through 60 hp (non-BigFoot) outboards
- Recommended for bass, flats and deep-v aluminum boats



# ELITE

## SERIES

Mercury's most trusted and best-selling propeller designs.



### BRAVO TWO

When you need enhanced mid- to top-end performance, the three-blade Bravo Two propellers step up to the plate. A large blade area provides maximum thrust, and their beefy design gives excellent maneuverability and better holding in turns.

- Aluminum Bravo Two propellers available from 19- to 23-pitch in right-hand and left-hand rotation
- Stainless steel Bravo Two propellers available from 11- to 25-pitch in right-hand and left-hand rotation
- Fits all Bravo Two stern drives



### BRAVO THREE

This amazing twin-propeller, contra-rotating system is standard equipment on Bravo Three drives. A large-diameter four-blade front propeller coupled with a smaller-diameter, three-blade rear propeller provide unbelievable acceleration, straight tracking, fuel economy, and precise handling around the dock.

- Sets available from 19- to 30-pitch
- Left-hand forward propeller and right-hand rear propeller
- Available in hi-polish and matte finish
- Fits all Bravo Three stern drives



### HIGH FIVE

Whether you're pulling skiers or hauling to your favorite fishing hole, Mercury's groundbreaking High Five propeller offers class-leading acceleration. Its five-blade design pulls strong and smooth, even in rough water. The High Five is an excellent fit on V6-powered stern drive runabouts where tow sports are a priority.

- Available in 17-, 19-, 21-, 23- and 25-pitch
- Right-hand rotation
- Fits all outboards 135 horsepower and up, and Alpha and Bravo One stern drives
- Recommended for V6-powered stern drive runabouts and outboard-powered freshwater deep-V fishing boats



## MIRAGE PLUS

The Mirage Plus is the best-selling high-horsepower propeller in the world. More offshore boat companies recommend the Mirage Plus than any other performance propeller. The large-diameter high-output blade geometry provides outstanding acceleration and top speed across a wide variety of applications.

- Available in 13- to 29-pitch in two-inch increments
- Right-hand and left-hand rotation
- Fits outboards (135hp and above); Alpha and Bravo One stern drives



# COMP

## SERIES

Mercury's most cutting-edge geometries for the most demanding boater.



### BRavo I

The Bravo I four-blade stainless steel propeller is included as standard equipment on more go-fast stern drive boats than any other high-performance propeller. The Bravo I is an ideal fit for high-speed high-drive-height stern drive applications and provides outstanding performance on catamarans and boats with stepped hulls.

- Available in 22- to 36-pitch
- Right-hand and left-hand rotation
- Fits outboards (135 hp and above), Alpha and Bravo One stern drives
- Recommended for big-block V8-powered stern drives with high-performance hulls (cats and stepped hulls)



### Enertia

The Enertia is a revolutionary propeller that improves both acceleration and top speed on center consoles, high-horsepower pontoons, and stern drive-powered runabouts. The Enertia was the first Mercury propeller to utilize the added strength and durability of Mercury's X7 alloy.

- Available in 14- to 22-pitch, in one-inch increments
- Available in right-hand and left-hand rotation (left-hand only available in 15-, 17-, 19- and 21-pitch)
- Fits all outboards 135hp and up, Alpha and Bravo One stern drives



### Fury

Mercury's state-of-the-art tournament bass propeller, the revolutionary Fury measurably improves acceleration and top speed on bass boats powered by 200hp and higher outboards. Mercury's testing revealed an increase of 1.4 MPH and 12 percent faster holeshot. The Fury is Mercury's top-of-the-line bass propeller and the first bass boat propeller to utilize the added strength and durability of Mercury's X7 alloy.

- Available in 24-, 25-, 26- and 27-pitch
- Right-hand rotation
- Recommended for bass boats with outboards 200hp and above



# COMP

## SERIES

Mercury's most cutting-edge geometries  
for the most demanding boater.



### MAXIMUS

The five-blade ultimate high-performance propeller ideally suited to power step-v hulls, v-bottoms and cats with high drive heights equipped with big block H.O., 8.2 MAG H.O. or Mercury Racing engines coupled with Bravo One or Bravo One XR stern drives. If moving from a Bravo I propeller, it is recommended to drop down two inches of pitch.

- Available in 24- to 34-pitch in two-inch increments
- Right-hand and left-hand rotation
- Recommended for Bravo One and Bravo One XR stern drives with big block power



### REVOLUTION 4

The Revolution 4 is the four-blade cousin of the legendary three-blade Tempest Plus. The Revolution 4 is an outstanding match for outboard-powered walleye boats, single- or twin-outboard-powered center consoles, and stern drive-powered deck or sport boats. The aggressive four-blade design provides outstanding holeshot and improved midrange over the Mirage Plus.

- Available in 15- to 25-pitch in two-inch increments
- Right-hand and left-hand rotation
- Fits outboards (135hp and above); Alpha and Bravo One stern drives
- Recommended for outboard-powered center consoles boats in single through quad applications where holding and fuel economy are a priority.



# APPLICATION CHART

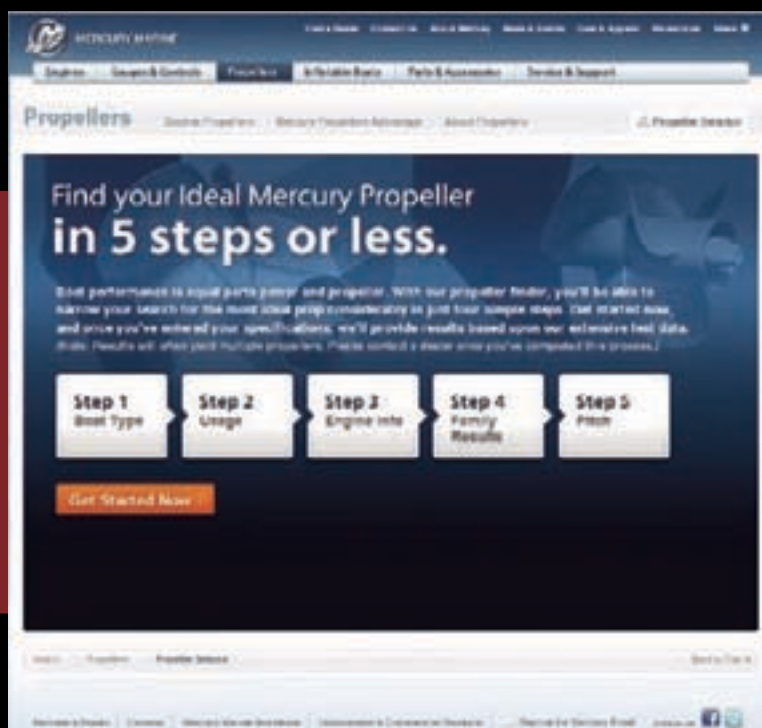
		ALUMINUM S E R I E S			SPORT S E R I E S			
		Alpha 4	Black Max	Spitfire	Laser II	Vengeance	Vensura	Bravo Two
SPECIFICATIONS	Available Pitches	16, 18, 20	5.5, 6, 6.5, 7, 7.5, 8, 8.4, 8.5, 9, 9.5, 10, 10.5, 11, 11.5, 12, 12.5, 13, 14, 14.5, 15, 16, 17, 18, 19, 21, 23, 25	9.5, 10, 11, 12, 13, 14, 15, 17, 19	19, 21, 23, 25	10, 12, 14, 15, 16, 17, 18, 19, 21, 23	17, 19, 21, 23	11, 13, 15, 17, 19, 21, 23, 25
	Material	Aluminum	Aluminum	Aluminum	Stainless Steel	Stainless Steel	Stainless Steel	Aluminum
	Rotation	LH, RH	RH	RH	LH, RH	RH	LH, RH	LH, RH
	PVS						■	
	Number of Blades	4	3	4	3	3	4	3
BOAT APPLICATIONS	Aluminum	■	■	■	■	■	■	
	Bass		■	■	■	■		
	Bowrider	■	■	■	■	■	■	
	Catamaran							
	Center Console						■	
	Cruiser	■	■			■	■	■
	Deckboat	■	■	■	■	■	■	
	Fish-n-ski	■	■	■	■	■	■	
	Houseboat		■	■		■		■
	Inflatable		■	■		■		
	Inshore fishing (bay, flats)		■	■	■	■		
	Multi-species					■	■	
	Offshore fishing					■	■	
	Pontoon		■	■		■		
	Runabout - Cuddy	■	■	■		■	■	■
	Runabout - Open Bow	■	■	■		■	■	
	Sportboat / Performance				■	■		
	Ski	■	■				■	
	Workboat		■					■

ELITE  
S E R I E S

COMP  
S E R I E S

Bravo Three	High Five	Mirage Plus	Tempest Plus	Trophy Plus	Trophy Sport	Bravo I	Enertia	Fury	Maximus	Revolution 4
19, 21, 22.5, 24, 26, 28, 30	17, 19, 21, 23, 25	13, 15, 17, 18, 19, 21, 23, 25, 27, 29	17, 19, 21, 22, 23, 24, 25, 26, 27, 29	17, 19, 21, 23, 24, 25, 26, 27, 28	12, 13, 14, 15	22, 24, 26, 28, 30, 32, 34, 36	14, 15, 16, 17, 18, 19, 20, 21, 22	24, 25, 26, 27	24, 26, 28, 30, 32, 34	15, 17, 19, 21, 23, 25
Stainless Steel	Stainless Steel	Stainless Steel	Stainless Steel	Stainless Steel	Stainless Steel	Stainless Steel	X7	X7	Stainless Steel	Stainless Steel
LH, RH	RH	LH, RH	LH, RH	RH	RH	LH, RH	LH, RH	RH	LH, RH	LH, RH
	■	■	■	■		■	■	■	■	■
3, 4	5	3	3	4	4	4	3	3	5	4
	■		■	■	■		■			■
	■		■	■	■	■		■		
■	■	■		■			■			■
		■				■				
		■				■	■			
■		■					■			
	■			■			■			
	■		■	■			■			■
							■			
					■					
	■		■	■	■	■		■		■
			■	■		■	■			■
		■	■	■		■	■			■
■					■		■			■
■	■						■			
■	■						■			
■		■	■			■			■	■
■	■									■
■		■					■			

STILL NOT SURE  
WHICH MERCURY PROPELLER  
IS RIGHT FOR YOU?  
EVER WONDER  
IF YOUR BOAT  
IS PROPPED CORRECTLY?



Visit our industry-leading prop selector. The Prop Selector is an online interactive guide that walks you through the prop selection process step by step – to ensure that you get the perfect prop to get the most performance out of your boat. There are even helpful videos to show you all the details for every step of the process!

[MercuryMarine.com](http://MercuryMarine.com)

